

BEARLED Report

Product Mark

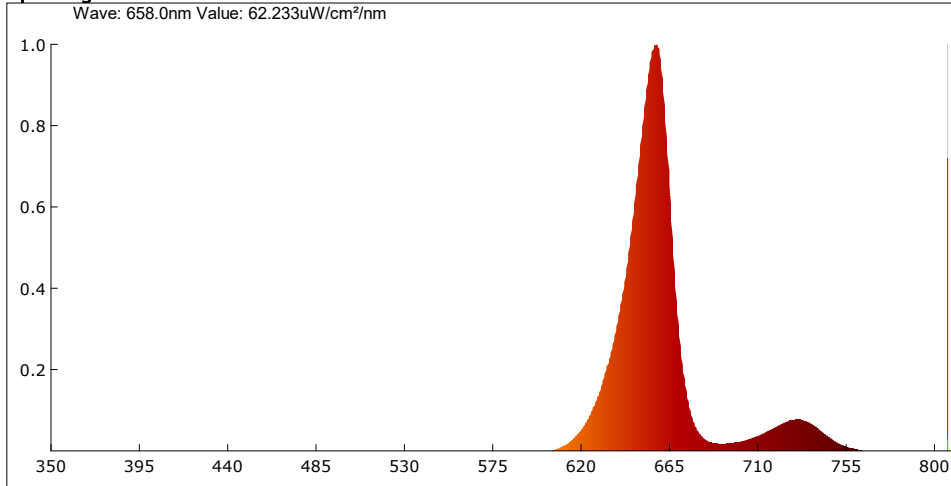
Model: Deep RED
Temperature: 27°C
Tester: admin

Manufacture:
Humidity: 55%
Test Date: 2022-11-14,15:25:55

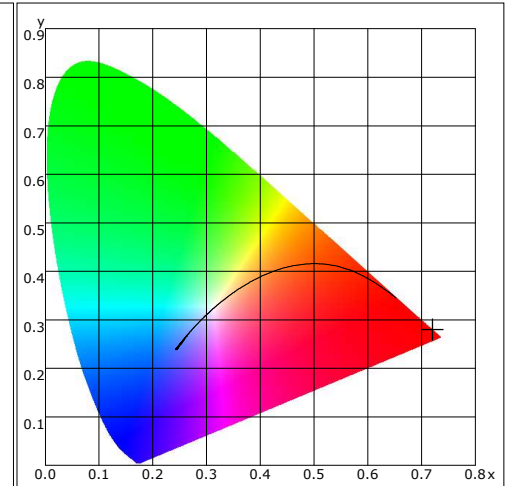
Parameter

Name	Value	Name	Value	Name	Value	Name	Value
PAR(mW/cm ²)	1.786	Euv(mW/cm ²)	0.000	Purity(%)	100.0		
PPFD(umol/m ² /s)	88.530	Efr(mW/cm ²)	0.810	HalfWidth(nm)	22.1		
PPFD_UV(umol/m ² /s)	0.000	Ec(mW/cm ²)	1.786	Peak(nm)	658.9		
PPFD_B(umol/m ² /s)	0.000	Erb Ratio	0.000	Center(nm)	656.3		
PPFD_G(umol/m ² /s)	0.000	E(lx)	1124.04	Centroid(nm)	661.1		
PPFD_R(umol/m ² /s)	88.530	Candle E(fc)	104.43	Color Ratio(RGB)	100.0,0.0,0.0		
PPFD_FR(umol/m ² /s)	10.198	CCT(K)	1001	CIE1931 X	4241.777		
PPFD_IR(umol/m ² /s)	0.000	Duv	-0.01329	CIE1931 Y	1645.742		
Kppfv(umol/s/klm)	78.761	CIE x,y	0.7204,0.2795	CIE1931 Z	0.162		
YFPD(umol/m ² /s)	84.571	CIE u,v	0.5865,0.3413	TLCI-2012	1		
EchA(mW/cm ²)	0.000	CIE u',v'	0.5865,0.5120	Integral Time(ms)	5		
EchB(uW/cm ²)	0.000	SDCM	100.00	Peak Signal	47128		
Ep(mW/cm ²)	1.544	Ra	-0.9	Dark Signal	1843		
Eb(mW/cm ²)	0.000	Ee(mW/cm ²)	1.786	Compensate level	2850		
Ey(mW/cm ²)	0.000	S/P	0.021				
Er(mW/cm ²)	1.619	Dominant(nm)	641.70				

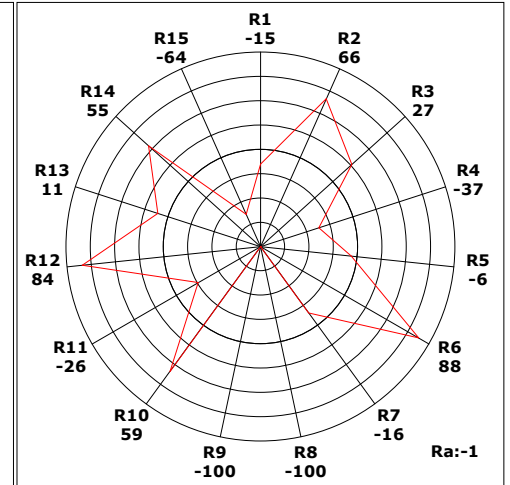
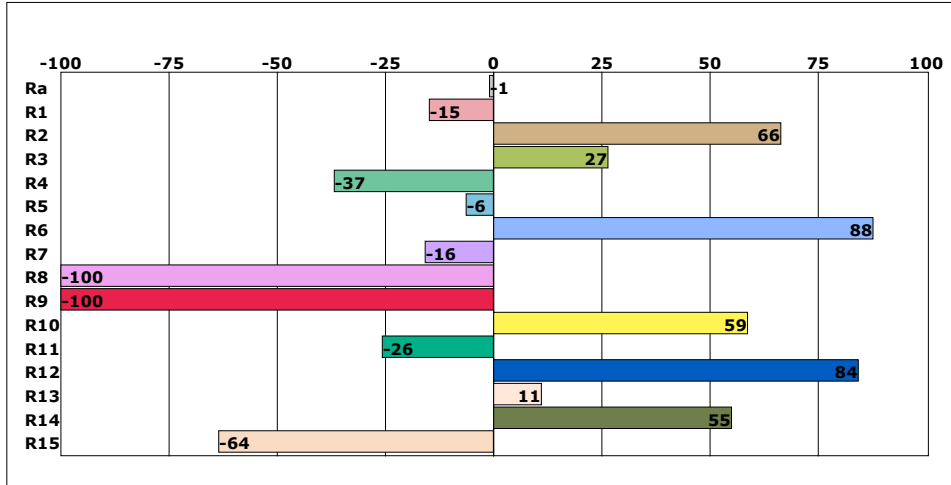
Spectrogram



CIE1931



CRI



Instrument Status

Type: OHSP-350P
Integral Time: 5.000ms

SN: 0
VPeak: 47128

Scan Range: 350-800nm
VDark: 1843

Remark: